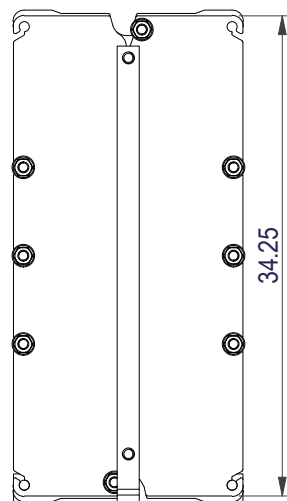
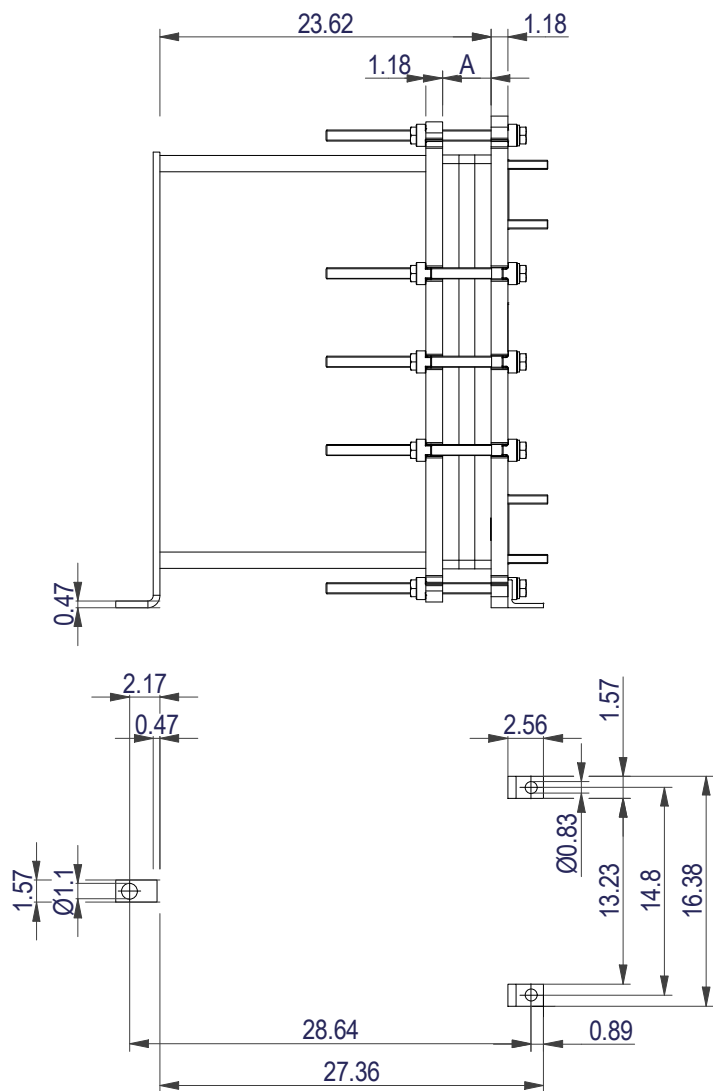


This document and its contents are subject to copyrights and other intellectual property rights owned by Alfa Laval (pub) or any of its affiliates (Alfa Laval). No part of this document may be copied, reproduced or transmitted in any form or by any means, or for any purpose, without Alfa Laval's prior express written permission. Information and services provided in this document are made as a benefit and service to the user, and no representations or warranties are made about the accuracy or suitability of this information and these services for any purpose. All rights are reserved.

PRESSURE PLATE
(MOVABLE)

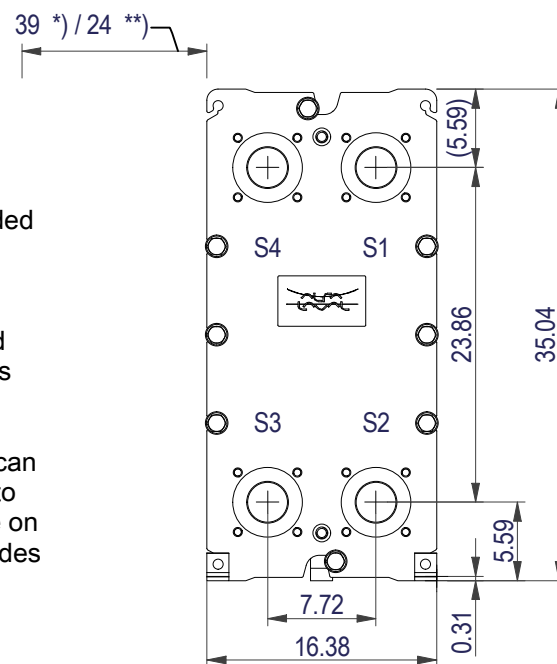


Space between pressure plate and supporting column should be kept free from fixed installations!



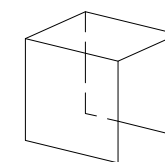
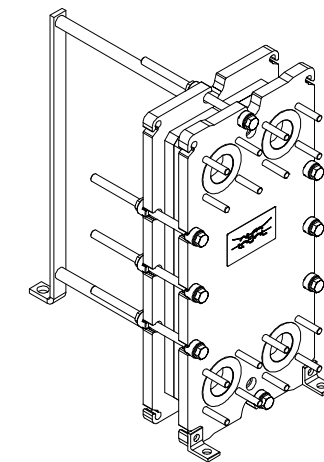
FRAME PLATE

All dimensions in inches

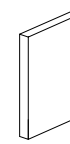


*) Recommended free space for opening and closing to be applied on both sides

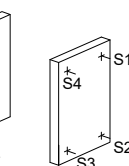
**) Free space can be reduced to this distance on one of the sides



PROTECTION SHEET

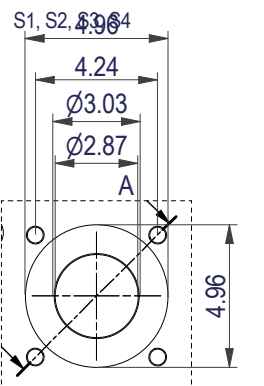


PRESSURE PLATE

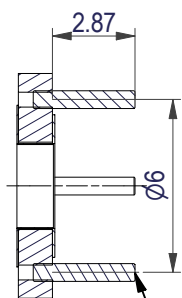


FRAME PLATE

ASME B16.5 Class 150 NPS 3



A-A:
ALLOY 316



5/8"-11 UNC (x4)

NO. OF UNITS

1

null GPM
null GPM

APPROX. OUTER DIMENSIONS

LENGTH 28.3 in
WIDTH 16.9 in
HEIGHT 35.4 in

APPROX. WEIGHTS

NET WEIGHT, EMPTY 449 lb
WEIGHT FULL OF WATER 486 lb
PLATE MATERIAL ALLOY 316
PLATE THICKNESS 0.5 mm
GASKET NBRP ClipGrip™

CHANNEL ARRANGEMENT 1*12 MH
/ 1*12 ML



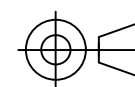
www.alfalaval.com

DRAWING
GASKETED PLATE HEAT EXCHANGER

T8-MFG

ASME
Code Section VIII Div.1

MAWP 150 psi at 150.1 °F
MDMT 32.0 °F at 150 psi
Designed and constructed in accordance with the 2019 ASME Code.



8240152983
T8-MFG, 25 plates

Do not use this drawing for foundation bolting or piping layout

DATE 5/2/22
REVISION 0